

For each open utility cut of City streets, a \$325 permit shall be required from the City prior to occupancy and/or project acceptance.

**Approved Construction Plan**

Name \_\_\_\_\_ Date \_\_\_\_\_

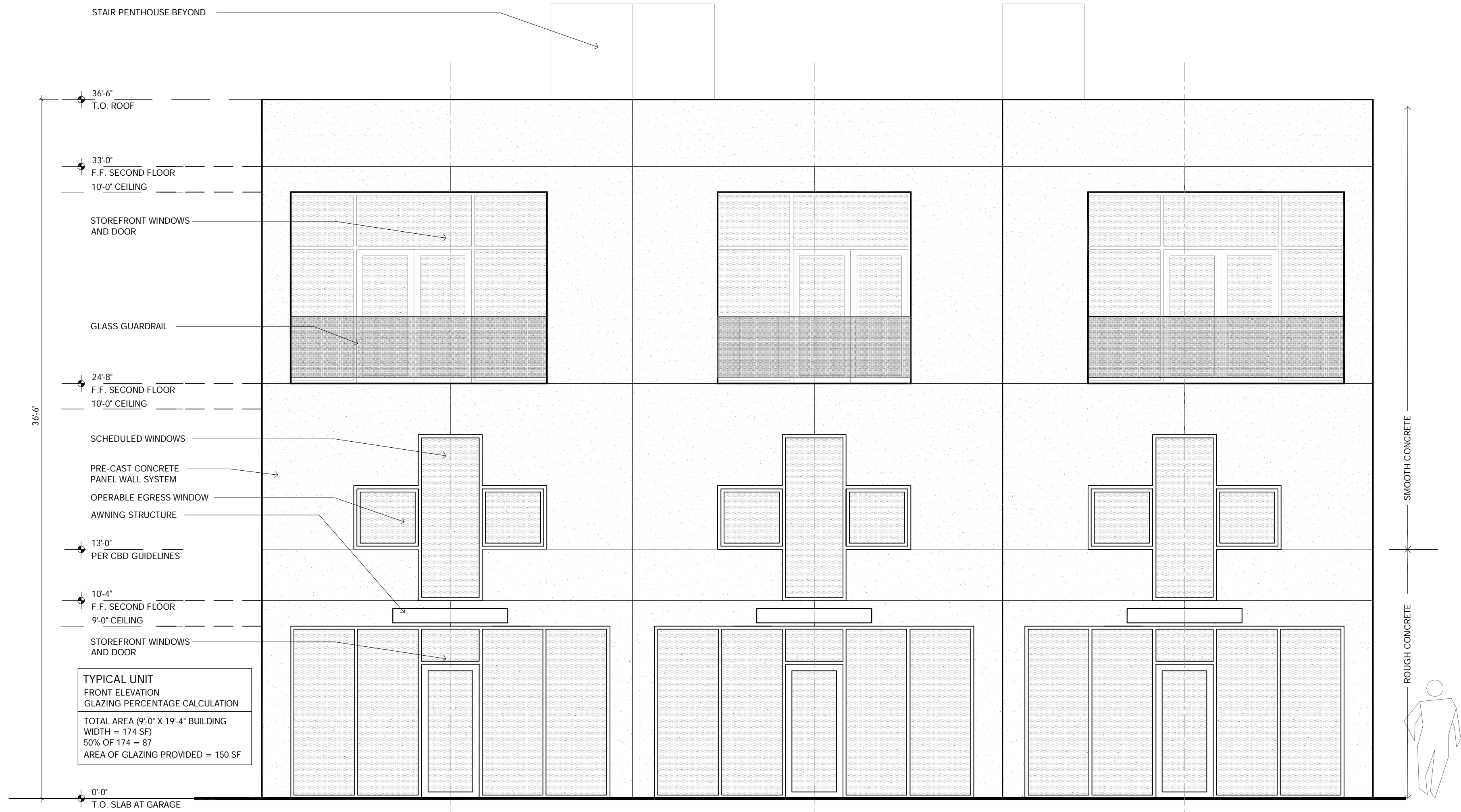
Planning \_\_\_\_\_

Traffic \_\_\_\_\_

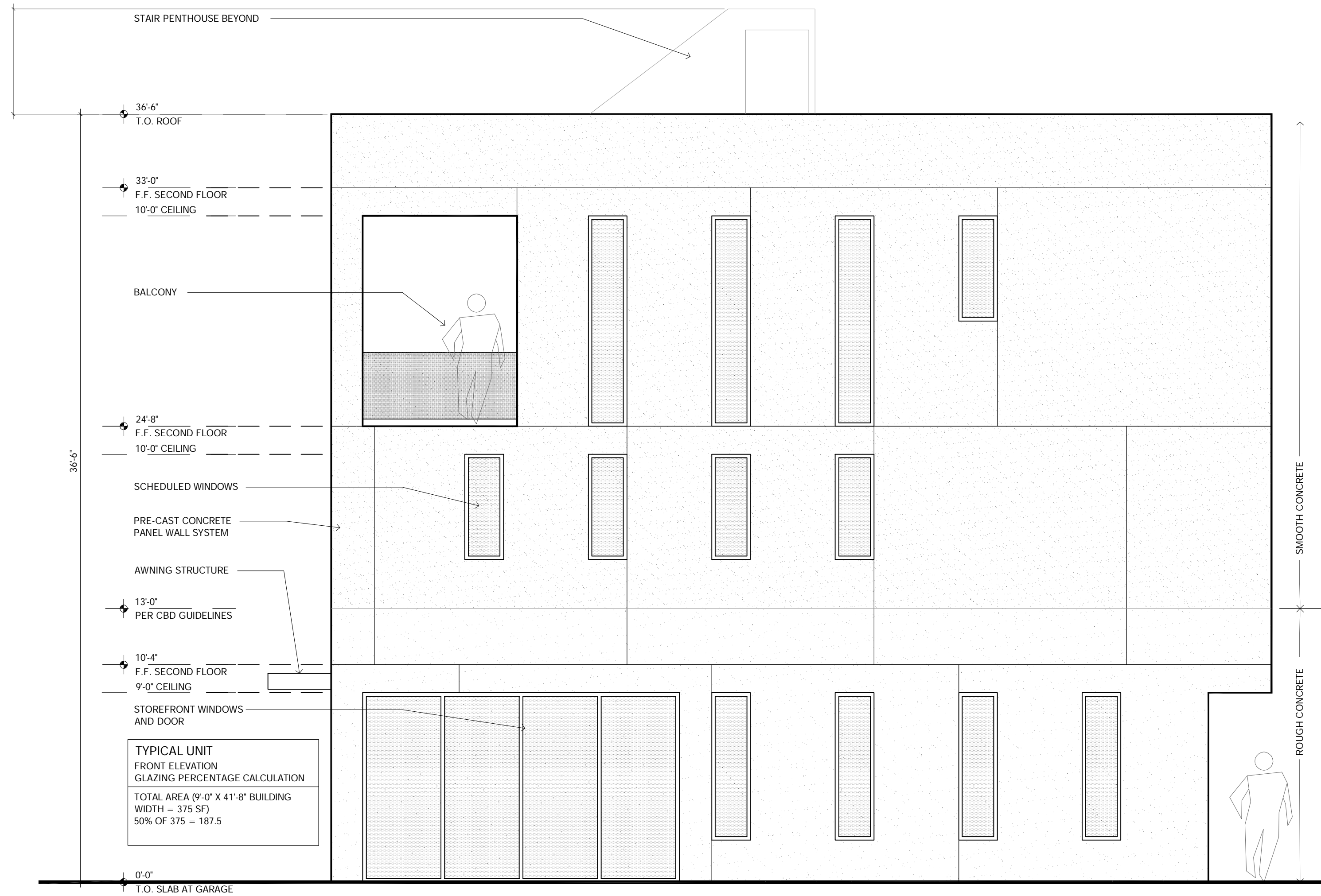
Fire \_\_\_\_\_

**DRAINAGE PLAN**  
**APPROVED**  
CITY OF WILMINGTON  
STORMWATER DISCHARGE  
PERMIT NOT REQUIRED

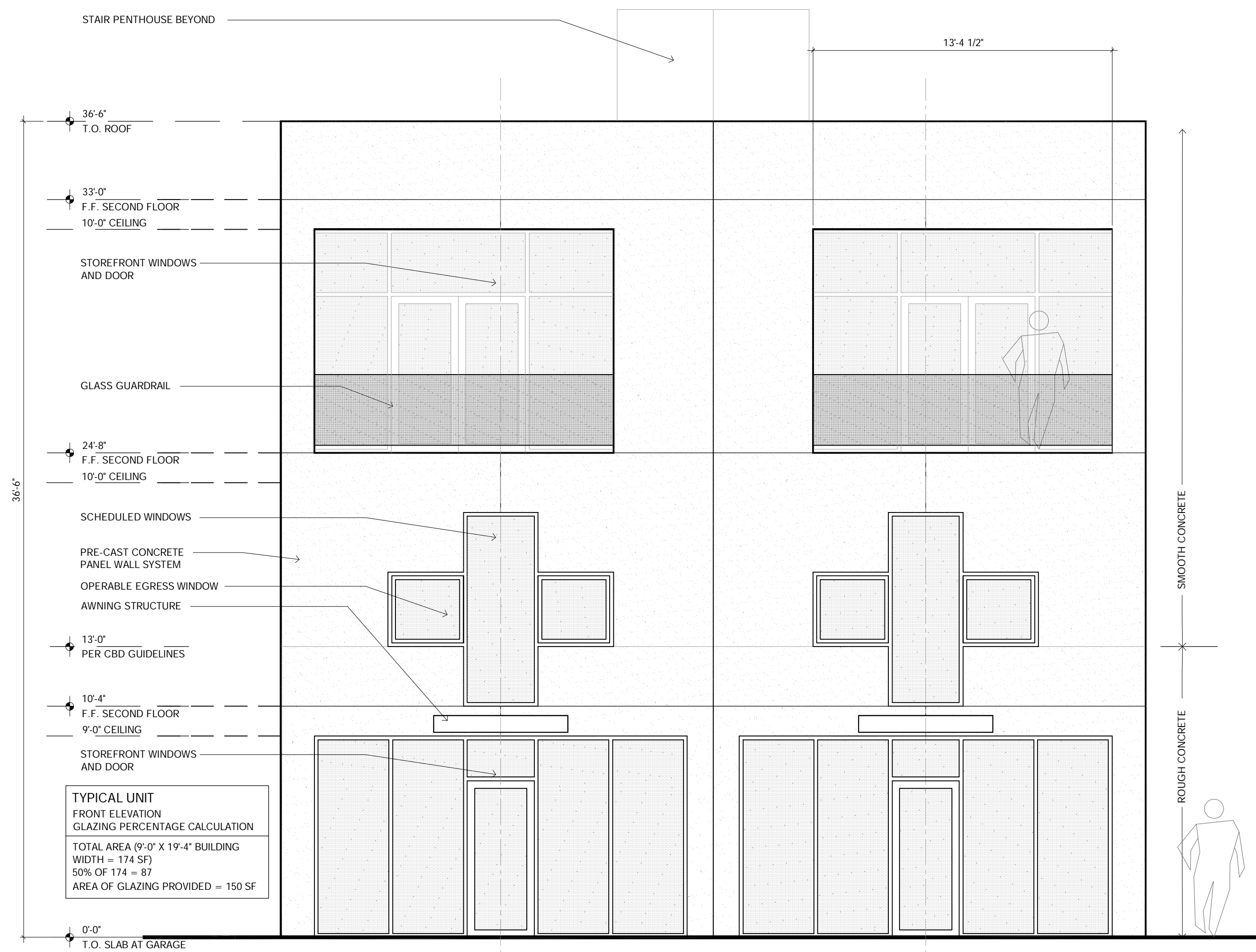
SIGNATURE \_\_\_\_\_ DATE \_\_\_\_\_



**3 TYPICAL TRIPLEX - THIRD STREET ELEVATION**  
SCALE = 1/4" = 1'-0"



**2 TYPICAL DUPLEX - HARNETT STREET ELEVATION**  
SCALE = 1/4" = 1'-0"



**1 TYPICAL DUPLEX - THIRD STREET ELEVATION**  
SCALE = 1/4" = 1'-0"

**Romero Architecture**  
2205 PARKWAY DRIVE --- WILMINGTON, NORTH CAROLINA --- 28403  
910.228.3127

**NORTH 3RD INFILL**  
1002 NORTH THIRD STREET  
WILMINGTON, NORTH CAROLINA 28401

**A201 ELEVATIONS**  
ISSUED FOR TRC SUBMISSION  
09.13.2016